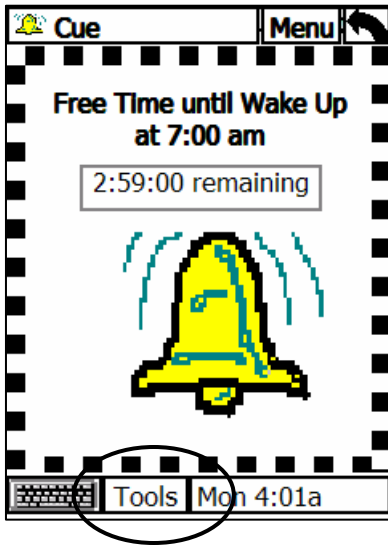
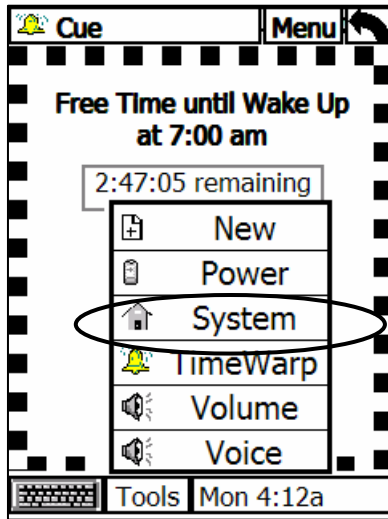


How to set the clock time for PEAT.

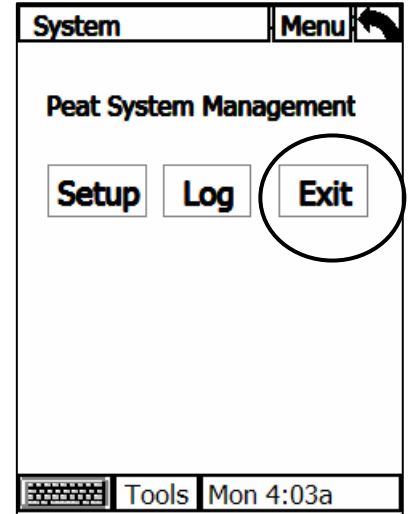
To set the clock, you must first exit PEAT as shown below:



1) Tap on the **Tools** button



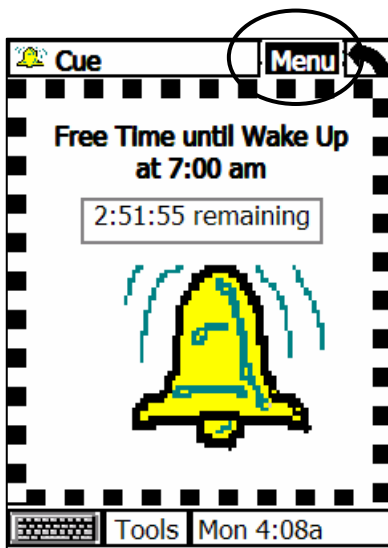
2) Tap on the **System** button



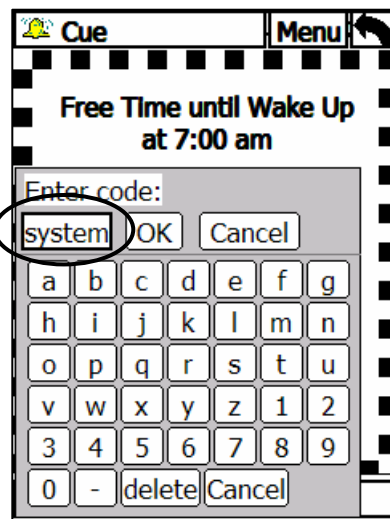
3) Tap on the **Exit** button.

How to exit PEAT without using the System button (alternative method for exiting PEAT)

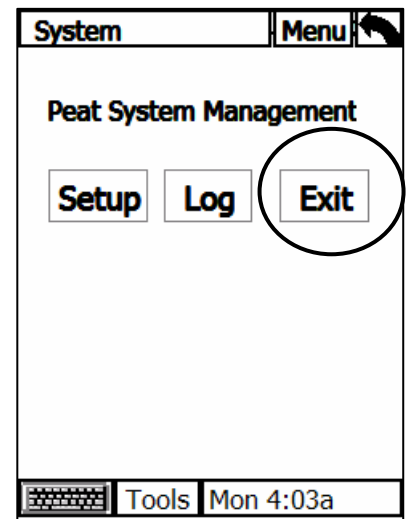
If you don't see the "System" button on the tools menu as shown above, then do the following to exit PEAT without using the system buttons:



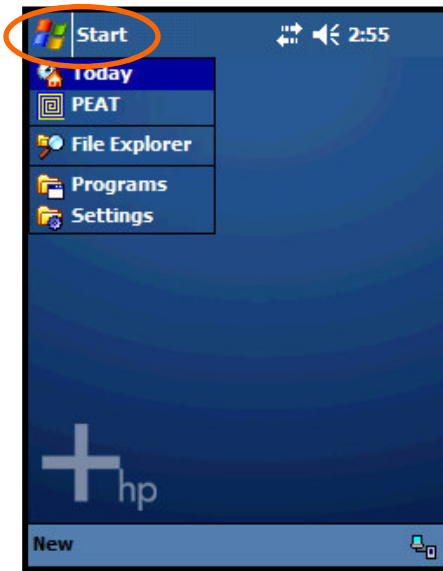
1) Press and hold the **Menu** button for 20 seconds. The **Menu** button must stay black, and watch the cue timer count down for 20 seconds.



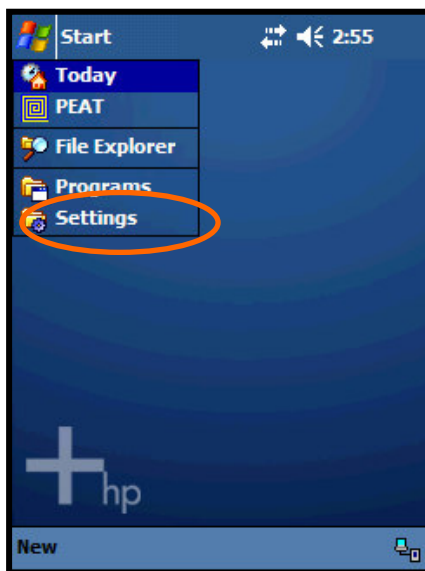
2) After the keyboard appears, type the word "system" and then tap "OK".



3) Tap on the **Exit** button.



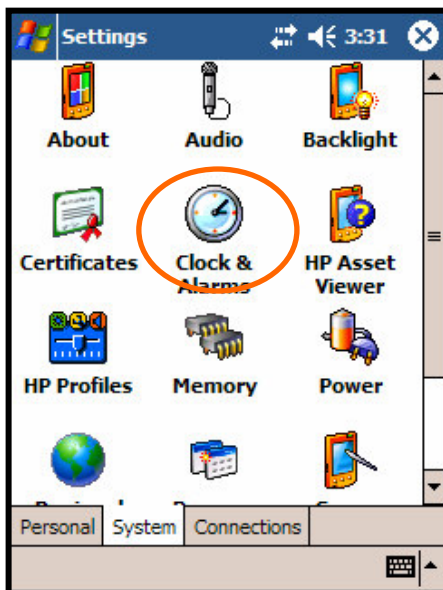
4) Tap on the **Start** menu button in the upper left corner.



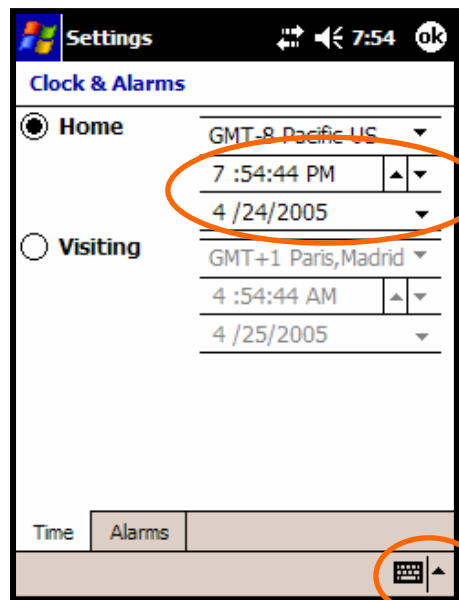
5) Tap on the **Settings** button



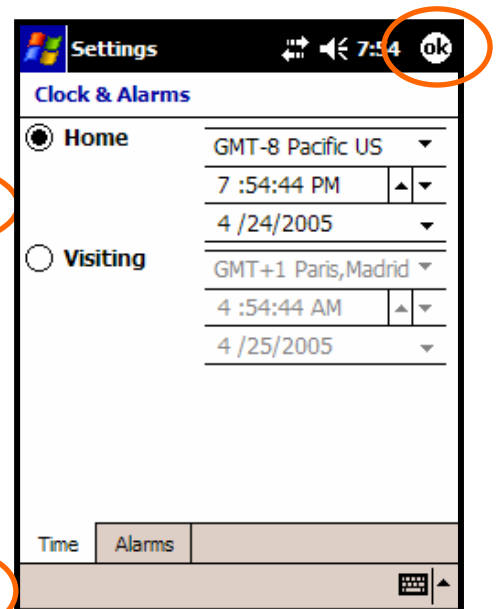
6) Tap on the **System** Tab



7) Tap on “**Clocks & Alarms**”

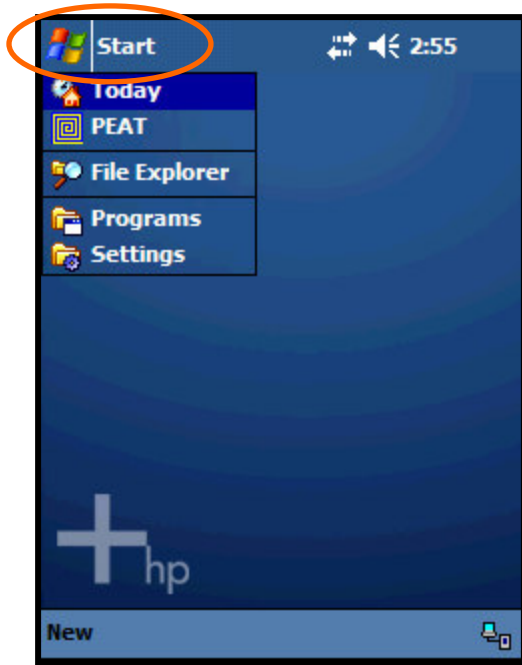


8) Set the time by tapping on the arrows next to the time, or by **tapping on the time** itself then using keyboard to enter the new time.

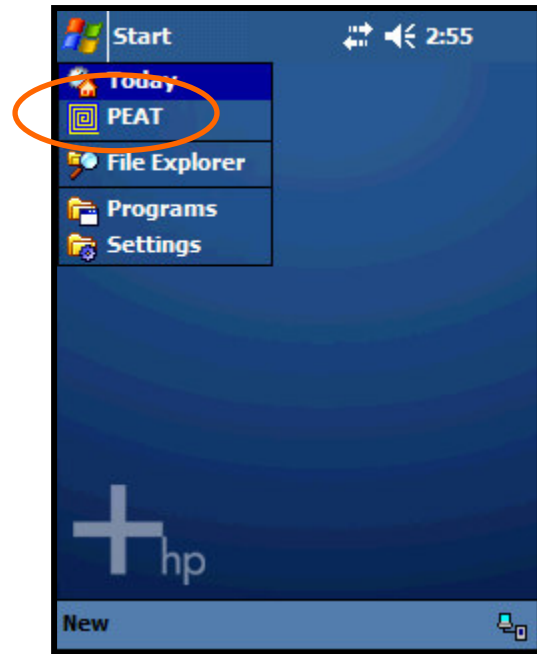


9) When you are done changing the time, then tap “**OK**” in the upper right corner.

10) Important!! You must restart PEAT after changing the clock.



10) Tap on “**Start**” button in upper left corner



11) Tap on “**PEAT**”